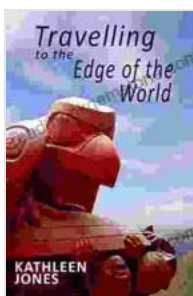


Venturing to the Edge of the World: A Journey to the Ends of the Earth

The world is a vast and wondrous place, full of hidden gems and breathtaking landscapes. But what if you could travel to the very edge of the world, to places where few have ventured before? In this article, we'll take you on a journey to some of the most remote and captivating destinations on Earth, where you'll experience the awe-inspiring beauty of nature and encounter unique cultures that have thrived in isolation for centuries.



Travelling to the Edge of the World by Kathleen Jones

★★★★☆ 4.6 out of 5

Language	: English
File size	: 6956 KB
Text-to-Speech	: Enabled
Screen Reader	: Supported
Enhanced typesetting	: Enabled
Word Wise	: Enabled
Print length	: 229 pages
Lending	: Enabled



1. The Patagonian Fjords, Chile

The Patagonian fjords are a series of deep, narrow inlets that cut into the rugged coastline of southern Chile. These fjords are home to some of the most stunning scenery on Earth, with towering mountains, cascading waterfalls, and pristine glaciers. You can explore the fjords by boat, kayak, or on foot, and you'll be amazed by the sheer beauty of this remote region.



2. Milford Sound, New Zealand

Milford Sound is a fiord located in the southwest of New Zealand's South Island. It is known for its stunning natural beauty, with towering cliffs, cascading waterfalls, and lush rainforests. Milford Sound is a popular tourist destination, and you can explore it by boat, kayak, or on foot. You can also take a scenic flight over the fiord, which will give you a bird's-eye view of this incredible landscape.



Milford Sound is known for its stunning natural beauty.

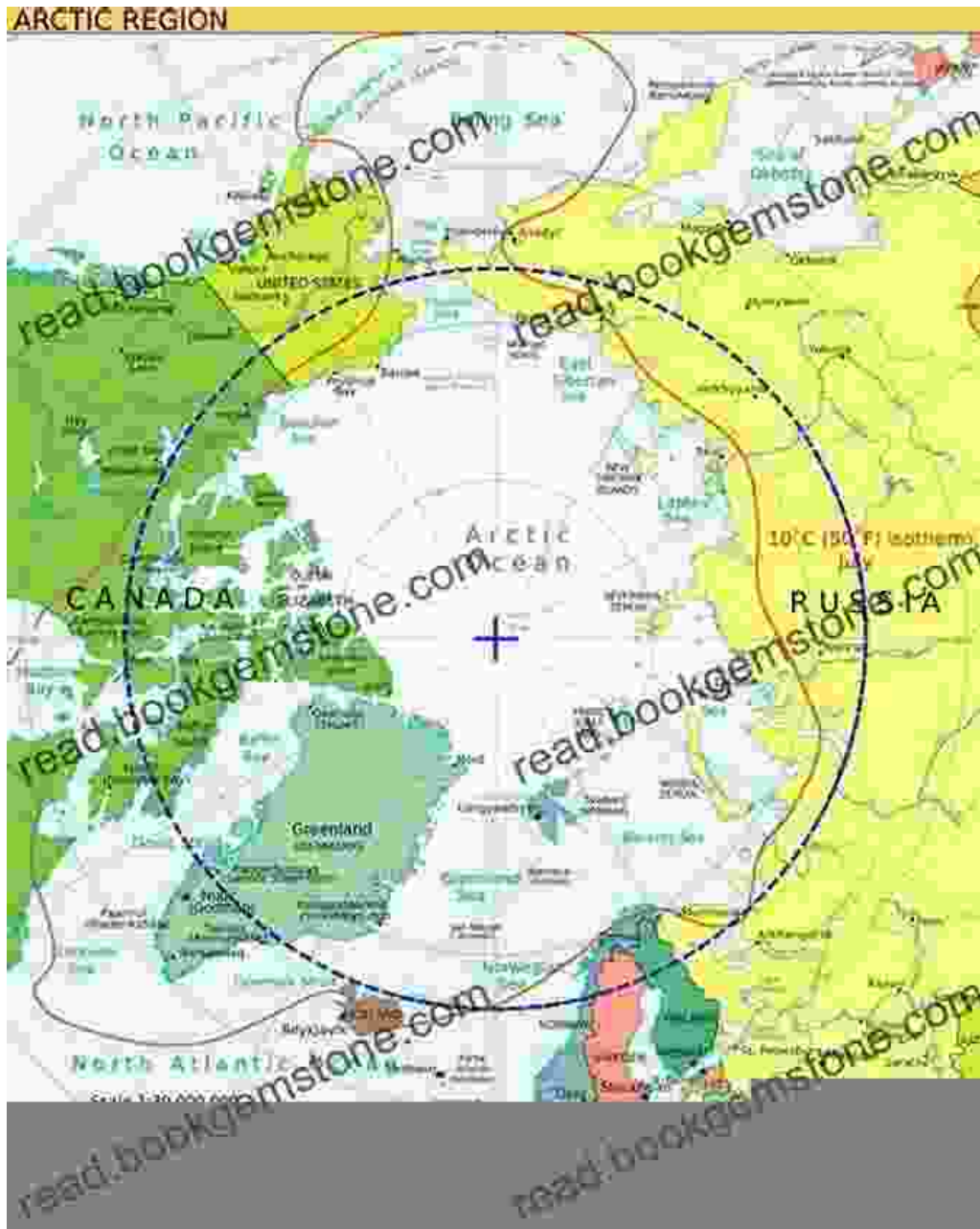
3. Iceland's Glaciers

Iceland is home to some of the most impressive glaciers in the world. These glaciers are a result of the country's unique geography, which is characterized by active volcanoes and geothermal activity. You can visit Iceland's glaciers by boat, kayak, or on foot, and you'll be amazed by their sheer size and beauty. You can also take a guided tour of a glacier, which will give you a chance to learn more about these incredible natural wonders.



4. The Arctic Circle

The Arctic Circle is a latitude that marks the northernmost point at which the sun can be seen at midnight during the summer solstice. The Arctic Circle is home to a unique ecosystem that is adapted to the extreme cold and darkness of the winter months. You can visit the Arctic Circle by boat, plane, or on foot, and you'll be amazed by the stark beauty of this remote region.

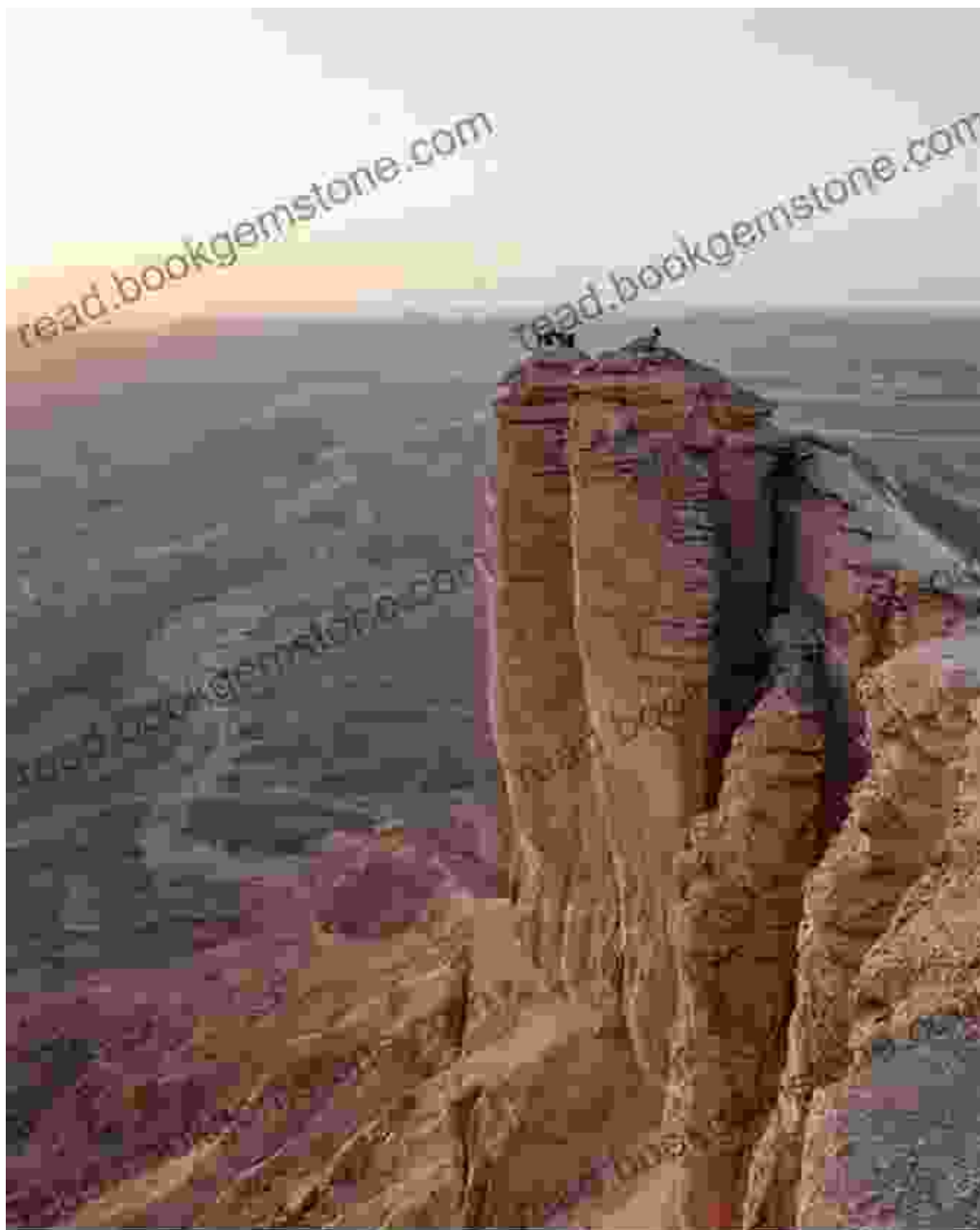


The Arctic Circle is home to a unique ecosystem.

5. The Antarctic Peninsula

The Antarctic Peninsula is the northernmost part of Antarctica. It is a remote and inhospitable region, but it is also home to some of the most incredible wildlife on Earth. You can visit the Antarctic Peninsula by boat,

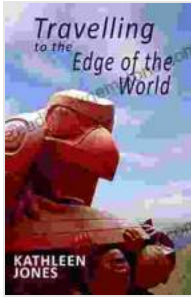
plane, or on foot, and you'll be amazed by the penguins, seals, and whales that call this region home. You can also take a guided tour of the Antarctic Peninsula, which will give you a chance to learn more about this incredible continent.



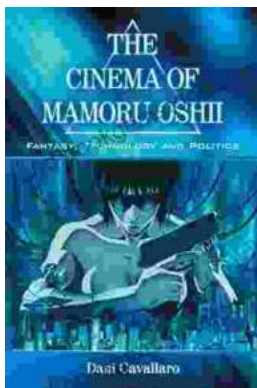
Travelling to the Edge of the World by Kathleen Jones

★★★★☆ 4.6 out of 5

Language : English

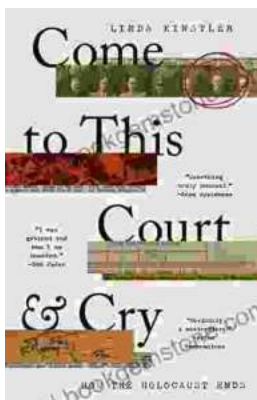


File size	: 6956 KB
Text-to-Speech	: Enabled
Screen Reader	: Supported
Enhanced typesetting	: Enabled
Word Wise	: Enabled
Print length	: 229 pages
Lending	: Enabled



Fantasy Technology and Politics: A Deep Dive into the Interwoven Worlds of Magic and Power

Fantasy literature has long captivated readers with its immersive worlds, epic battles, and compelling characters. However, beyond the surface-level...



Come To This Court And Cry: A Tale of Love, Loss, and Redemption

Come To This Court And Cry is a powerful and moving novel that explores the themes of love, loss, and redemption. The novel tells the story of a young woman...